



# PREMIUM DISPLAY SOLUTIONS FOR HOSPITAL ADMINISTRATORS

8MP 31.5inch\* High-Precision Diagnostic Monitor

MD85CA



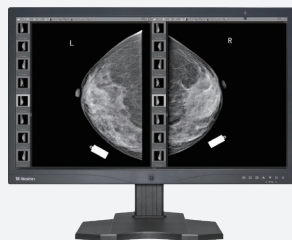
# Premium Diagnostic Display for Modern Healthcare

The MD85CA is a 31.5-inch professional medical monitor with ultra-high 3840×2160 (8MP) resolution, delivering exceptional clarity for clinical reading. It supports both color and grayscale images, with gamma rendering for color and full DICOM Part 14 compliance for image accuracy.

The display supports a wide range of viewing modes, including single, dual, triple, quad, and multi-screen layouts—up to 8 screens simultaneously. Each window can be individually set for gamma and color temperature, ensuring precise comparison. Perfectly suited for mammography systems and PACS workstations.

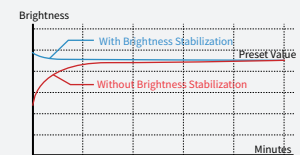
## Fit for Mammography

With the dual-screen function, a single monitor can simultaneously display left and right breast images, effectively replacing two 5MP diagnostic displays.



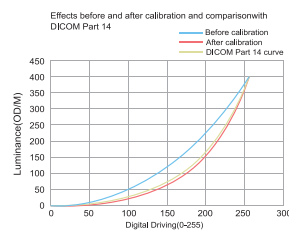
## CBS Luminance Stabilization

Innovative CBS system automatically compensates for brightness degradation, ensuring long-term image stability and diagnostic precision.



## DICOM-QC Auto Calibration

Automatic DICOM curve detection and real-time adjustment to meets DICOM Part 14 standards within  $\pm 5\%$  deviation.



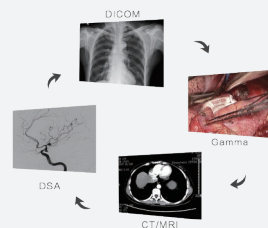
## Ambient Light Compensation

Automatically adjusts screen brightness based on surrounding light to meet DICOM standards, improve diagnostic accuracy, and reduce eye strain.



## Multiple Display Modes

Supports DICOM grayscale for various medical devices and color gamma for multiple applications, allowing doctors to customize viewing preferences.



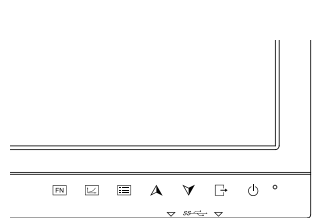
## Multi-channel Independent Display

Supports up to 8 split screens, independent multi-signal display, and one-click-switching between single, dual, triple, quad, multi-screen display modes.

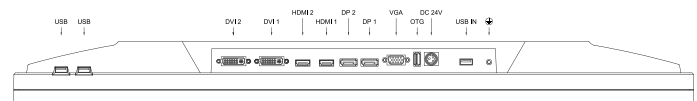


## User-Friendly Control Panel and Wide Range of Connectors

The MD85CA features an intuitive user interface and supports smooth integration with mammography systems, PACS workstations, and a wide range of imaging modalities.



- Single/ Dual view (Short press), 1/8 view toggle (Long press)
- Gamma mode (Short press)/ Resolution display & Signal source (Long press)
- Menu key/ Key lock (Long press)
- Hotkey to choose up/ Adjust contrast ratio
- Hotkey to choose down/ Adjust brightness/ Main View toggle (8-View mode)
- Exit/ Film viewer
- Power switch



## Specifications

### 31.5 " 8MP Diagnostic Monitor --MD85CA

#### PICTURE PERFORMANCE

Active Screen Size	31.5 inches(80.01cm)
Pixel Pitch (H x V)	0.18159mm x 0.18159mm
Resolution (H x V)	3840×2160
Color Depth	12 Bit
Aspect Ratio	16:9
Backlight	LED
Panel Technology	TFT
Luminance (Panel Specification)	350 cd/m <sup>2</sup> (default)
Contrast Ratio	1300:1
Colors Approx	68.7 billion colors
Response Time	14ms (TYP)
Viewing Angle (Panel Specification)	178° V. / 178° H.
GAMMA	GAMMA1.8, GAMMA2.0, GAMMA2.2, GAMMA2.4,RX1,RX2, CRT, DSI, DSA,CT/MRI, DICOM350,DICOM400 ,DICOM450, DICOM500, DICOM600, LINEAR

#### INPUT

VGA INPUT	VGA connector (x1)
DVI INPUT	DVI-D connector (x2)
HDMI INPUT	HDMI connector (x2); HDMI1.4
DP INPUT	DP connector (x2); DP1.4
USB INPUT	USB-IN connector(x1),USB connector(x2)
OTG INPUT	OTG connector (x1)

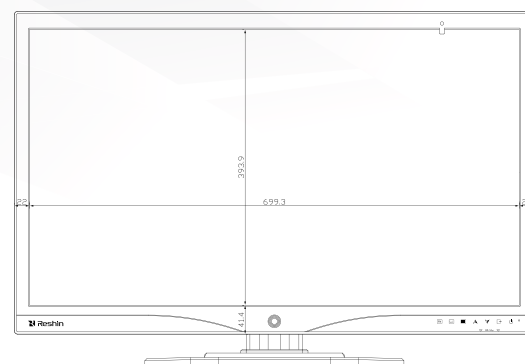
#### OUTPUT

OUTPUT	N/A
--------	-----

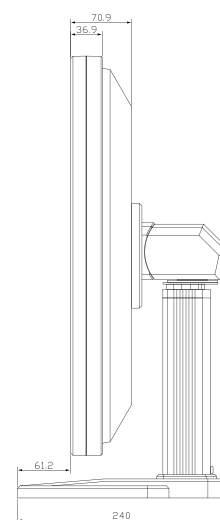
#### GENERAL

Power Requirements	DC 24V 5A
Power Consumption	120W (MAX)
Operating Temperature	0°C~40°C
Operating Humidity	10% to 80% (no condensation allowed)
Storage/Transport Temperature	-20°C~50°C
Storage/Transport Humidity	10% to 90% (no condensation allowed)
Dimensions(without Stand)	743.1(W)x461.2(H)x70.9(D)mm
Weight (without Stand)	9.6±0.5Kg
Weight	12.9±0.5KG
Mounting	VESA 100x100mm
Structural Appearance	Black Plastic Shell
Application	Image Consultation/Remote Medical Consultation/ OperationTeaching/PACS Diagnosis Workstation/ Expert Desktop
Supplied Accessories	LCD display (x1), Certificate (x1), Warranty card (x1), Power Cable (x1), Power Adapter (x1), DP cable (x1), USB 3.0 Male-to-Male Cable(x1), Packing list (x1), Graphics Card (x1), DVI Cable (x1)

#### FRONT



#### SIDE



#### BACK

