

PRECISION IN FULL HD NO DETAIL MISSED, NO STEP DELAYED

27 inch FHD Premium-quality Surgical Monitor

MS270P

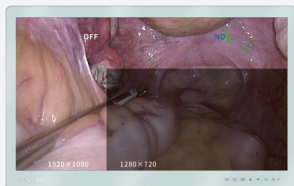
Accurate Color, Trusted Clarity for Medical Endoscopy

The 27" surgical monitor features a 1920×1080 IPS FHD screen and AR anti-reflective protective front glass, compliant with IEC 60601-1. Its flicker-free screen reduces eye fatigue during prolonged endoscopic examinations.

Engineered for reliability, the monitor supports SDI, DVI, VGA, Video and S-Video inputs to seamlessly integrate with endoscopy systems. With optimized brightness uniformity and a wide viewing angle, it ensures consistent image quality for operating rooms, surgical centers, clinics and consulting rooms.

Accuracy, 27-inch Full HD Image.

Designed for clear visualization of 2D color video images from surgical endoscopic, laparoscopic, and other compatible medical imaging systems



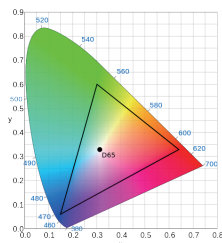
Full Mirror Design

The flat surface allows the O.R. team to quickly identify and wipe away liquids and gels from the LCD panel, rear cover, and control buttons.



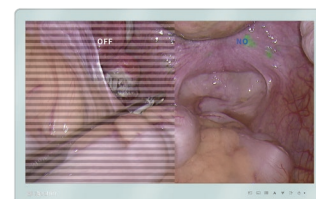
True-to-life Color Reproduction

BT.709 Real-color Display. Enhanced by Reshin's patented technology for accurate and true-to-life color reproduction.



Eyes Comfort

Flicker Safe cuts screen flicker to near-zero, preventing eye fatigue. Combined with IPS tech, it delivers comfortable, prolonged viewing experiences.



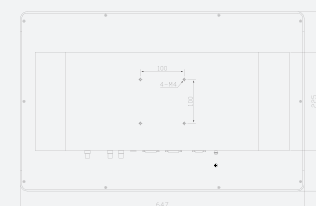
Anti-Reflection LCD Panel

The monitor's LCD panel features anti-reflection technology that greatly reduces glare in brightly lit O.R.'s by controlling the light reflection and minimizing its dispersion, allowing clear high contrast images to be displayed.



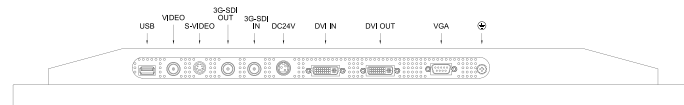
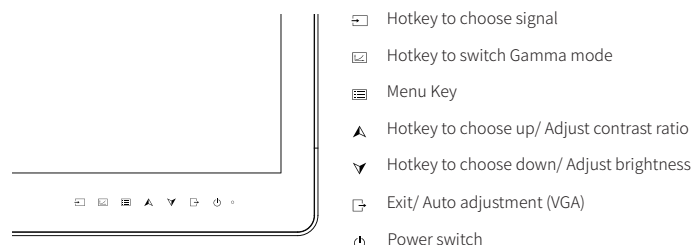
VESA 100×100 Compatible

Flexible mounting for various surgical scenarios, including endoscopy carts and surgical arms.



User-Friendly Control Panel and Wide Range of Connectors

Versatile input/output options ensure seamless endoscopy integration, while the user-friendly control panel allows for effortless operation.



Specifications

27 " FHD Surgical Monitor -- MS270P

Picture Performance

Active Screen Size	27 inches (68.58 cm)
Pixel Pitch (H x V)	0.3114mm x 0.3114mm
Resolution (H x V)	1920×1080
Aspect Ratio	16:9
Backlight	LED
Panel Technology	TFT
Luminance (Panel Specification)	500 cd/m ² (default)
Contrast Ratio	1000:1
Colors Approx	1.07 billion colors
Response Time	14ms (TYP)
Viewing Angle (Panel Specification)	178° V. / 178° H.
GAMMA	Gamma1.8, Gamma1.9, Gamma2.0, Gamma2.1, Gamma2.2, Gamma2.3, Gamma2.4, Gamma2.5, Gamma2.6, Customer 1, Customer 2, Customer 3, Customer 4, DICOM, LINEAR

INPUT

Digital Video	DVI connector (x1), 3G-SDI connector(x1)
Analog Video	VGA connector (x1), S-Video connector (x1), Video connector (x1)
Sync & Control	USB connector (x1)

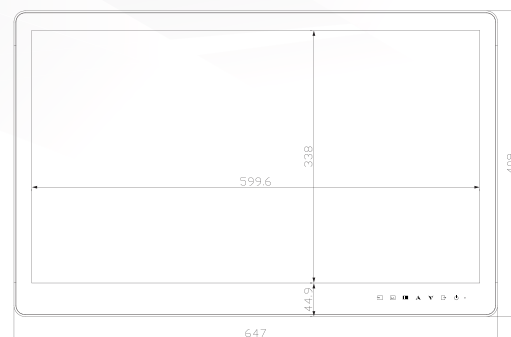
OUTPUT

Digital Video	DVI connector (x1), 3G-SDI connector(x1)
---------------	--

GENERAL

Power Requirements	DC 24V 5A
Power Consumption	80W (MAX)
Operating Temperature	0°C~40°C
Operating Humidity	10% to 80% (no condensation allowed)
Storage/Transport Temperature	-20°C~50°C
Storage/Transport Humidity	10% to 90% (no condensation allowed)
Dimensions (without Stand)	647(W)x409(H)x59.9(D)mm
Weight (without Stand)	8.5±0.5KG
Mounting	VESA 100x100mm
Structural Appearance	White Metal Shell With AR Protective Front Glass
Application	Laparoscopic Surgery/ Gastrointestinal Endoscopy/ Thoracoscopic Surgery/ Urological Surgery/ Gynecological Laparoscopy/ Arthroscopic Surgery/ Hybrid Operating Rooms, etc
Supplied Accessories	LCD display (x1), Certificate (x1), Warranty card (x1), Power Cable (x1), Power Adapter (x1), Packing list (x1), DVI cable (x1)

FRONT



SIDE



BACK

