

# ENHANCE YOUR OR WITH RESHIN 4K CLARITY

4K UHD 31.5 inch\* Premium-quality Surgical Monitor

MS321PB

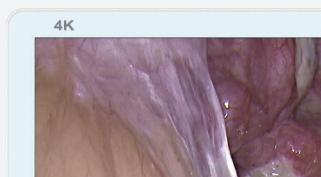
# Precision Imaging, Seamlessly Integrated for the O.R.

The 31.5" surgical monitor features a 3840×2160 IPS 4K screen and AR anti-reflective protective front glass. Its optical bonding technology effectively prevents dust and liquid contamination during operations, meeting the stringent purification requirements of an operating room.

With a full range of signal interfaces, it supports various image displays. The specialized 12G-SDI module supports 2160P60 (true 4K) display, and the dedicated SDI cable allows for lossless transmission over distances exceeding 50 meters. Its strong anti-interference capability makes it an excellent choice for surgical environments.

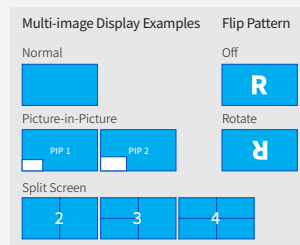
## 4K Ultra HD Resolution

The 31.5-inch\* (3840 x 2160) monitor displays 4K images with four times the detail of Full-HD.



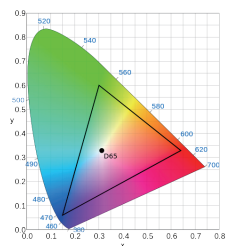
## Variety of Display Modes

The MS321PB supports quick and easy image display from multiple sources via its on-screen menu. It offers a variety of display modes, including picture-by-picture, picture-in-picture (PIP), three-split, and four-split screen layouts.



## True-to-life Color Reproduction

BT.709 Real-color Display. Enhanced by Reshin's patented technology for accurate and true-to-life color reproduction.



## Full Mirror Design

The flat surface allows the O.R. team to quickly identify and wipe away liquids and gels from the LCD panel, rear cover, and control buttons.



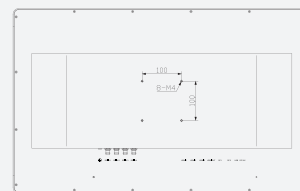
## Anti-Reflection LCD Panel

The monitor's LCD panel features anti-reflection technology that greatly reduces glare in brightly lit O.R.'s by controlling the light reflection and minimizing its dispersment, allowing clear high contrast images to be displayed.



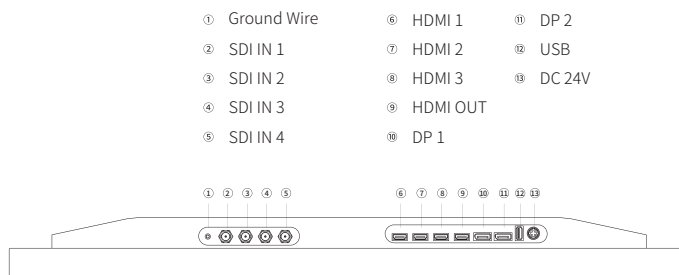
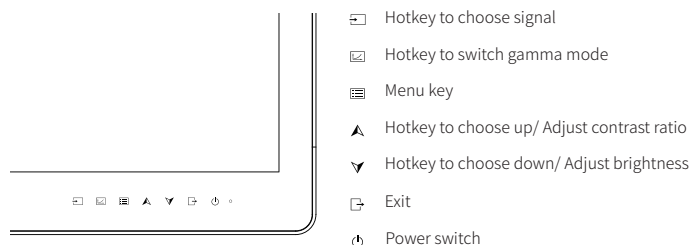
## VESA 100×100 Compatible

Flexible mounting for various surgical scenarios, including endoscopy carts and surgical arms.



## User-Friendly Control Panel and Wide Range of Connectors

Versatile input/output options ensure seamless O.R. integration, while the user-friendly control panel allows for effortless operation.





## Specifications

### 31.5 " 4K Surgical Monitor -- MS321PB

#### Picture Performance

Active Screen Size	31.5 inches(80.01cm)
Pixel Pitch (H x V)	0.18159mm x 0.18159mm
Resolution (H x V)	3840×2160
Aspect Ratio	16:9
Backlight	LED
Panel Technology	TFT
Luminance (Panel Specification)	500 cd/m <sup>2</sup> (default)
Contrast Ratio	1300:1
Colors Approx	1.07 billion colors
Response Time	14ms (TYP)
Viewing Angle (Panel Specification)	178° V. / 178° H.
GAMMA	Gamma1.8, Gamma1.9, Gamma2.0, Gamma2.1, Gamma2.2, Gamma2.3, Gamma2.4, Gamma2.5, Gamma2.6, DICOM, Linear

#### INPUT

HDMI INPUT	HDMI connector (x3); HDMI 2.0
DP INPUT	DP connector (x2); DP 1.2
SDI INPUT	3G-SDI input connector BNC type (x4); 12G-SDI input connector BNC type (x1); SDI IN 1 is 12G-SDI input connector when 12G-SDI Mode
USB INPUT	USB connector (x1);

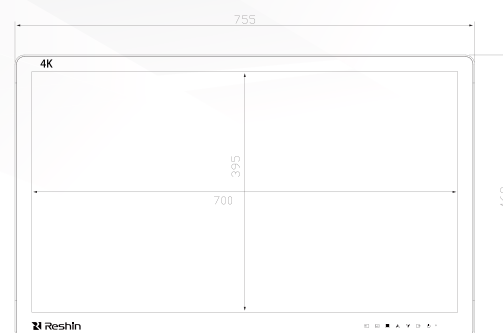
#### OUTPUT

HDMI OUTPUT	HDMI connector (x1); HDMI 2.0
-------------	-------------------------------

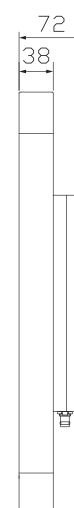
#### GENERAL

Power Requirements	DC 24V 5A
Power Consumption	120W (MAX)
Operating Temperature	0°C~40°C
Operating Humidity	10% to 80% (no condensation allowed)
Storage/Transport Temperature	-20°C~50°C
Storage/Transport Humidity	10% to 90% (no condensation allowed)
Dimensions (without Stand)	755(W)x469(H)x72(D)mm
Weight (without Stand)	14.27KG±0.5KG
Mounting	VESA 100x100mm
Structural Appearance	White metal shell with AR-coated white protective glass; Optical Bonding Technology
Application	Laparoscopic Surgery/ Gastrointestinal Endoscopy/ Thoracoscopic Surgery/ Urological Surgery/ Gynecological Laparoscopy/ Arthroscopic Surgery8 Hybrid Operating Rooms/ etc
Supplied Accessories	LCD display (x1), Certificate (x1), Warranty card (x1), Power Cable (x1), Power Adapter (x1), Packing list (x1), SDI cable (x4), DP cable (x1), HDMI cable (x1)

#### FRONT



#### SIDE



#### BACK

