

ENHANCE YOUR OR WITH RESHIN 4K CLARITY

4K UHD 42.51 inch* Premium-quality Surgical Monitor

MS430PC

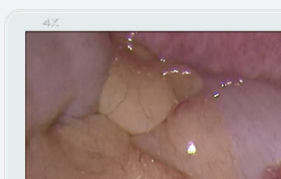
Precision Imaging, Seamlessly Integrated for the O.R.

The 42.51" surgical monitor features a 3840×2160 IPS 4K display with AR (anti-reflective) protective front glass. Its optical bonding technology effectively prevents dust and liquid infiltration during surgery, meeting the strict hygiene standards required in operating rooms.

Equipped with multiple HDMI and DP inputs, it supports true 4K resolution—offering over four times the detail of Full HD—for clear and precise 2D color imaging. It is ideal for displaying visuals from surgical endoscopes, laparoscopic camera systems, and other medical imaging equipment.

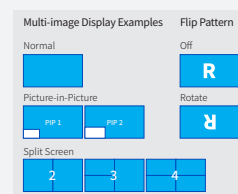
Large 4K Screen

The 4K resolution on 42.51-inch (3840 x 2160) large screen offers high picture quality, four times the details of Full-HD.



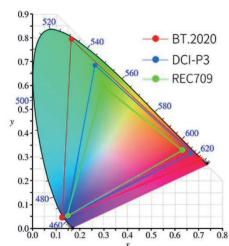
Variety of Display Modes

The MS430PC supports quick and easy image display from multiple sources via its on-screen menu. It offers a variety of display modes, including picture-by-picture, picture-in-picture (PIP), three-split, and four-split screen layouts.



Complies with BT.2020

The LCD panel and signal processing technology provide a wide color gamut, which complies with BT.2020.



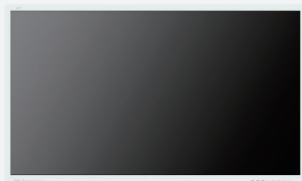
Full Mirror Design

The flat surface allows the O.R. team to quickly identify and wipe away liquids and gels from the LCD panel, rear cover, and control buttons.



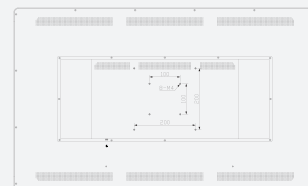
Anti-Reflection LCD Panel

The monitor's LCD panel features anti-reflection technology that greatly reduces glare in brightly lit O.R.'s by controlling the light reflection and minimizing its dispersement, allowing clear high contrast images to be displayed.



VESA Compatible

VESA 100x100mm, VESA 200x200mm
Flexible mounting for various surgical scenarios, including endoscopy carts and surgical arms.



User-Friendly Control Panel and Wide Range of Connectors

Versatile input/output options ensure seamless endoscopy integration, while the user-friendly control panel allows for effortless operation.



- Hotkey to choose signal
- Hotkey to switch gamma mode
- Menu key
- Hotkey to choose up/ Adjust contrast ratio
- Hotkey to choose down/ Adjust brightness
- Exit
- Power switch



Specifications

42.51" 4K Surgical Monitor -- MS430PC

Picture Performance

Active Screen Size	42.51 inches(107.98cm)
Pixel Pitch (H x V)	0.2451mm x 0.2451mm
Resolution (H x V)	3840×2160
Aspect Ratio	16:9
Backlight	LED
Panel Technology	TFT
Luminance (Panel Specification)	500 cd/m ² (default)
Contrast Ratio	1000:1
Colors Approx	1.07 billion colors
Response Time	8ms (TYP)
Viewing Angle (Panel Specification)	178° V. / 178° H.
GAMMA	Gamma1.8, Gamma1.9, Gamma2.0, Gamma2.1, Gamma2.2, Gamma2.3, Gamma2.4, Gamma2.5, Gamma2.6, DICOM, LINEAR

INPUT

HDMI INPUT	HDMI connector (x3); HDMI 2.0
DP INPUT	DP connector (x2); DP 1.2
USB INPUT	USB connector (x1)

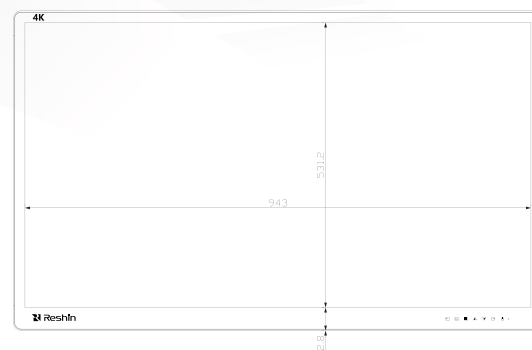
OUTPUT

HDMI OUTPUT	HDMI connector (x1); HDMI 2.0
-------------	-------------------------------

GENERAL

Power Requirements	DC 24V 5A
Power Consumption	120W (MAX)
Operating Temperature	0°C~40°C
Operating Humidity	10% to 80% (no condensation allowed)
Storage/Transport Temperature	-20°C~50°C
Storage/Transport Humidity	10% to 90% (no condensation allowed)
Dimensions (without Stand)	986.6(W)x595.6(H)x79.7(D)mm
Weight (without Stand)	19.4±0.5KG
Mounting	VESA 100x100mm, VESA 200x200mm
Structural Appearance	White metal shell with ultra-clear AR glass (6-layer coating) Optical Bonding Technology
Application	Laparoscopic Surgery/ Gastrointestinal Endoscopy/ Thoracoscopic Surgery/ Urological Surgery/ Gynecological Laparoscopy/ Arthroscopic Surgery/ Hybrid Operating Rooms, etc
Supplied Accessories	LCD display (x1), Certificate (x1), Warranty card (x1), Power Cable (x1), Power Adapter (x1), Packing list (x1), DP cable (x1), HDMI cable (x1)

FRONT



SIDE



BACK

