

ENHANCE YOUR OR WITH RESHIN 4K CLARITY

4K UHD 55 inch* Premium-quality Surgical Monitor

MS550P

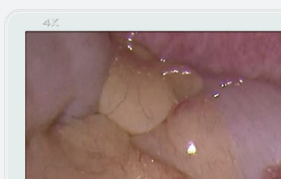
Precision Imaging, Seamlessly Integrated for the O.R.

The 55" surgical monitor features a 3840×2160 IPS 4K screen and AR anti-reflective protective front glass. Its optical bonding technology effectively prevents dust and liquid contamination during operations, meeting the stringent purification requirements of an operating room.

With a full range of signal interfaces, it supports various image displays. The specialized 12G-SDI module supports 2160P60 (true 4K) display, and the dedicated SDI cable allows for lossless transmission over distances exceeding 50 meters. It is ideal for displaying visuals from surgical endoscopes, laparoscopic camera systems, and other medical imaging equipment.

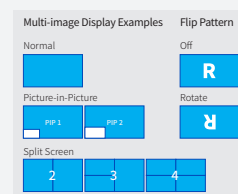
Large 4K Screen

The 4K resolution on 55-inch (3840 x 2160) large screen offers high picture quality, four times the details of Full-HD.



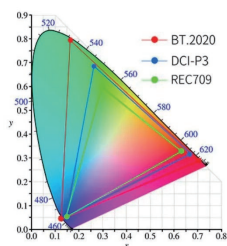
Variety of Display Modes

The MS550P supports quick and easy image display from multiple sources via its on-screen menu. It offers a variety of display modes, including picture-by-picture, picture-in-picture (PIP), three-split, and four-split screen layouts.



Complies with BT.2020

The LCD panel and signal processing technology provide a wide color gamut, which complies with BT.2020.



Full Mirror Design

The flat surface allows the O.R. team to quickly identify and wipe away liquids and gels from the LCD panel, rear cover, and control buttons.



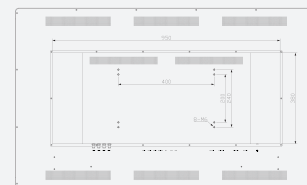
Anti-Reflection LCD Panel

The monitor's LCD panel features anti-reflection technology that greatly reduces glare in brightly lit O.R.'s by controlling the light reflection and minimizing its dispersement, allowing clear high contrast images to be displayed.



VESA Compatible

VESA 400×200mm, VESA 400x240mm
Flexible mounting for various surgical scenarios, including endoscopy carts and surgical arms.



User-Friendly Control Panel and Wide Range of Connectors

Versatile input/output options ensure seamless O.R. integration, while the user-friendly control panel allows for effortless operation.



- Hotkey to choose signal
- Hotkey to switch Gamma mode
- Menu Key
- Hotkey to choose up/ adjust contrast ratio
- Hotkey to choose down/ adjust brightness
- Exit
- Power switch



Specifications

55 " 4K Surgical Monitor —MS550P

Picture Performance

Active Screen Size	55 inches(139.70cm)
Pixel Pitch (H x V)	0.315mm x 0.315mm
Resolution (H x V)	3840×2160
Aspect Ratio	16:9
Backlight	LED
Panel Technology	TFT
Luminance (Panel Specification)	500 cd/m ² (default)
Contrast Ratio	1100:1
Colors Approx	1.07 billion colors
Response Time	8ms (TYP)
Viewing Angle (Panel Specification)	178° V. / 178° H.
GAMMA	Gamma1.8, Gamma1.9, Gamma2.0, Gamma2.1, Gamma2.2, Gamma2.3, Gamma2.4, Gamma2.5, Gamma2.6, DICOM, LINEAR

INPUT

HDMI INPUT	HDMI connector (x3); HDMI 2.0
DP INPUT	DP connector (x2); DP 1.2
SDI INPUT	3G-SDI input connector BNC type (x4); 12G-SDI input connector BNC type (x1); SDI IN 1 is 12G-SDI input connector when 12G-SDI Mode
USB INPUT	USB connector (x1)

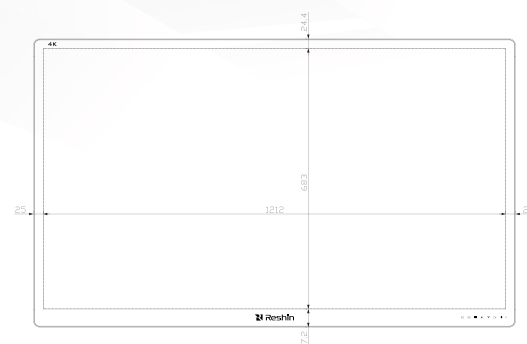
OUTPUT

HDMI OUTPUT	HDMI connector (x1); HDMI 2.0
-------------	-------------------------------

GENERAL

Power Requirements	AC 100-240V Dual Power Supply
Power Consumption	300W (MAX)
Operating Temperature	0°C~40°C
Operating Humidity	10% to 80% (no condensation allowed)
Storage/Transport Temperature	-20°C~50°C
Storage/Transport Humidity	10% to 90% (no condensation allowed)
Dimensions (without Stand)	1262(w)x754.6(H)x89.9(D)mm
Weight (without Stand)	36.5±0.5KG
Mounting	VESA 400x200mm, VESA 400x240mm
Structural Appearance	White metal shell with front AR protective glass; Optical Bonding Technology
Application	Laparoscopic Surgery/ Gastrointestinal Endoscopy/ Thoracoscopic Surgery/ Urological Surgery/ Gynecological Laparoscopy/ Arthroscopic Surgery/ Hybrid Operating Rooms, etc
Supplied Accessories	LCD display (x1), Certificate (x1), Warranty card (x1), Power Cable (x2), Packing list (x1), SDI cable (x4), DP cable (x1), HDMI cable (x1)

FRONT



SIDE



BACK

